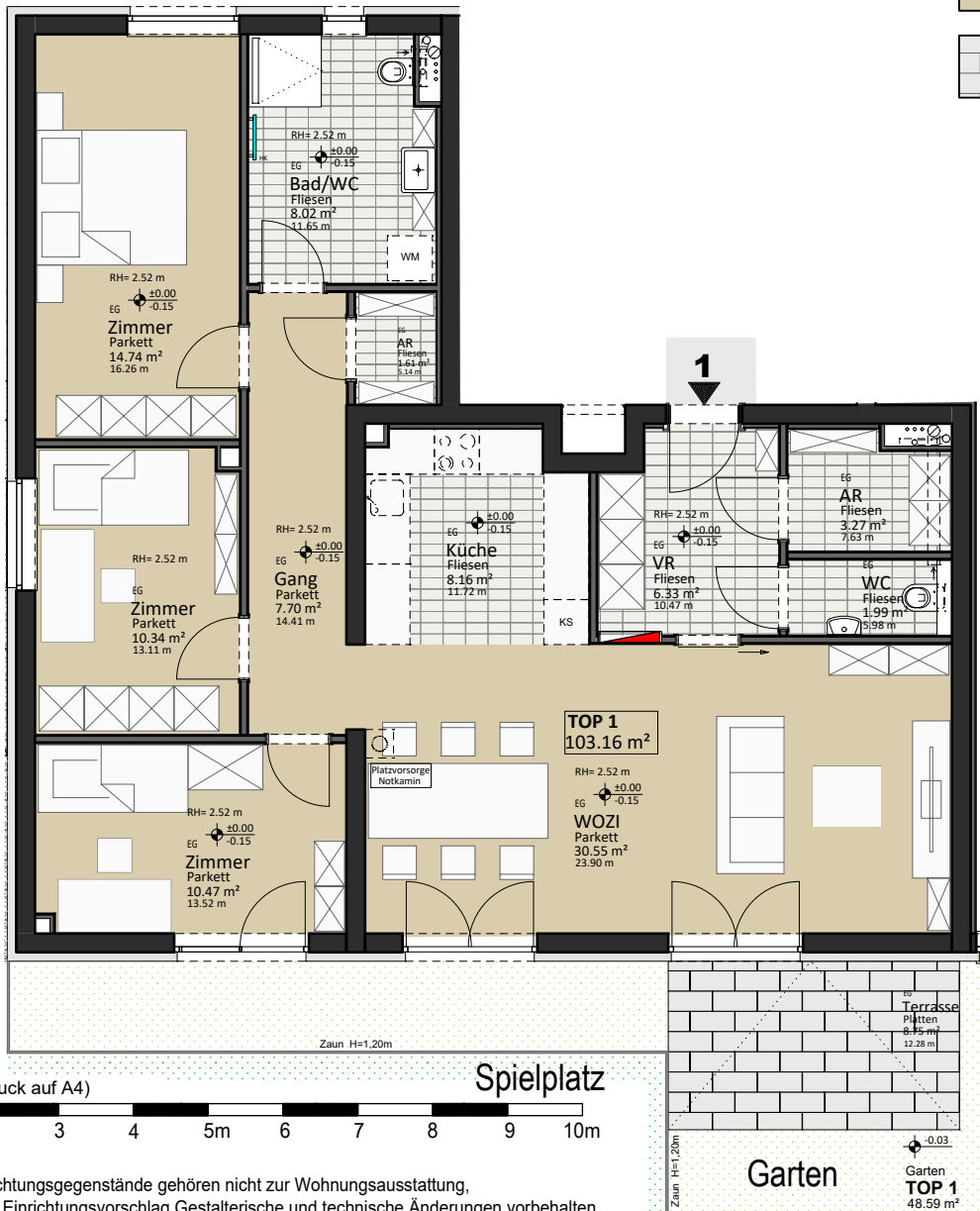
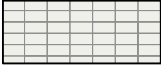

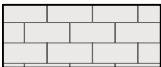


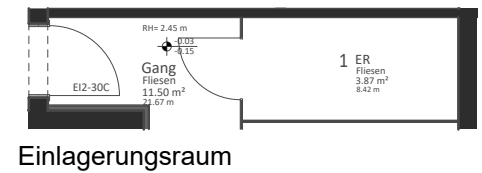
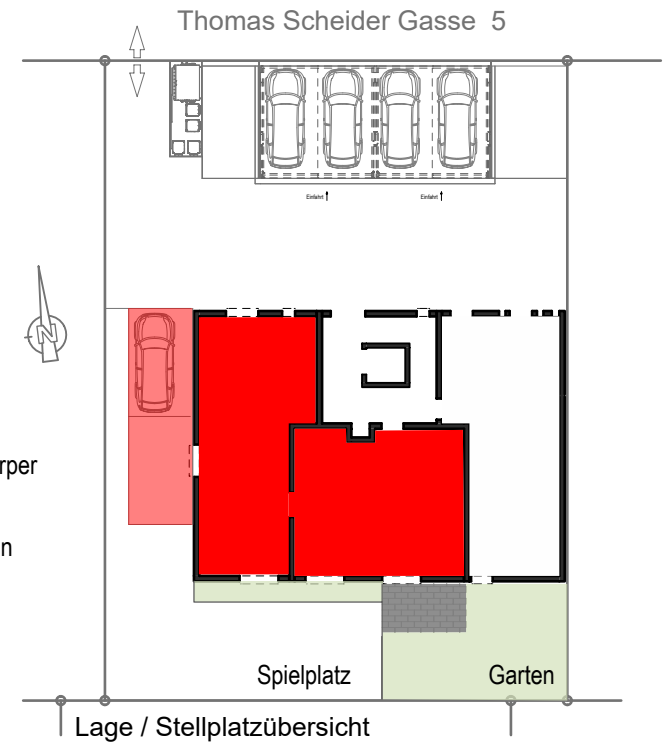


THOMAS SCHEIDER GASSE 5-7 GERASDORF



-  Fliesen
-  Parkett
-  Kunststein
-  Vorbereitung für Handtuchheizkörper
-  Wohnungsstation



Thomas Scheider Gasse 5

TOP	1	ERDGESCHOSS	
Nutzfläche	103.16 m ²	Garten	ca.48.59m ²
Terrasse	8.75m ²	Einlagerraum	3.87m ²